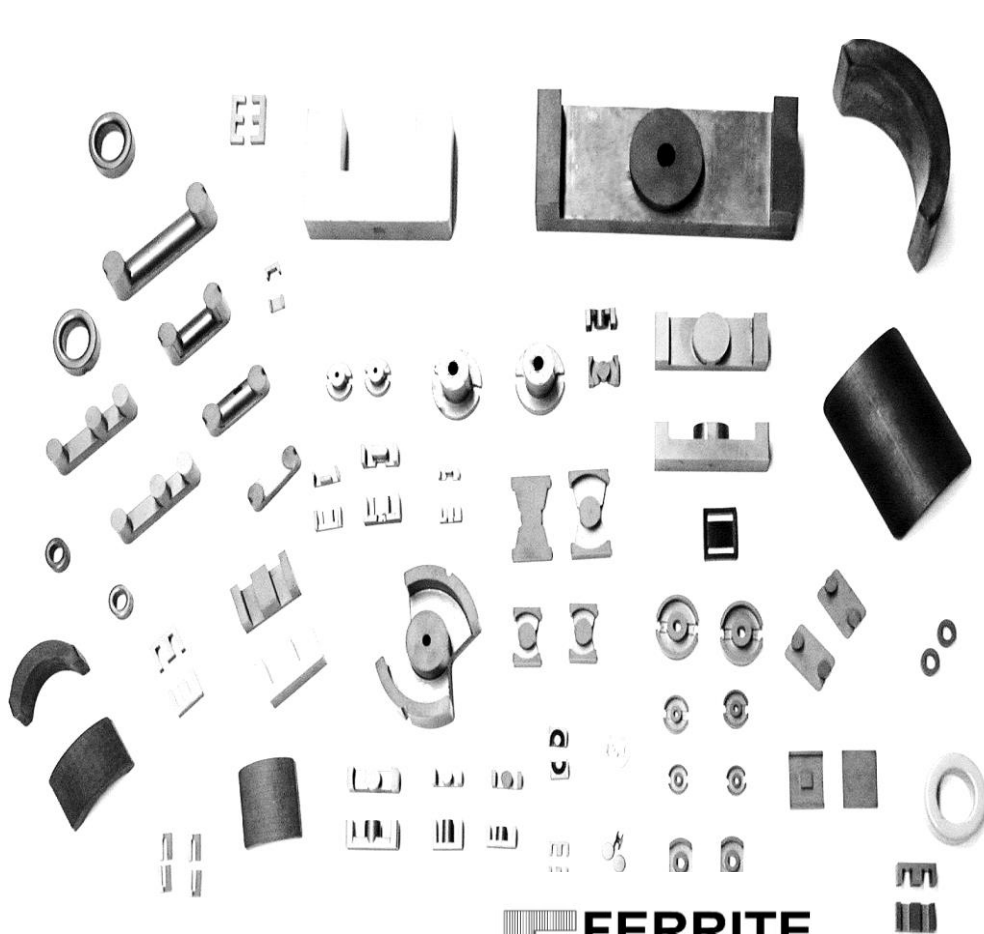


FERRITE INTERNATIONAL

A TSC INTERNATIONAL COMPANY

FERRITE CORE SIZE / SHAPE CATALOG

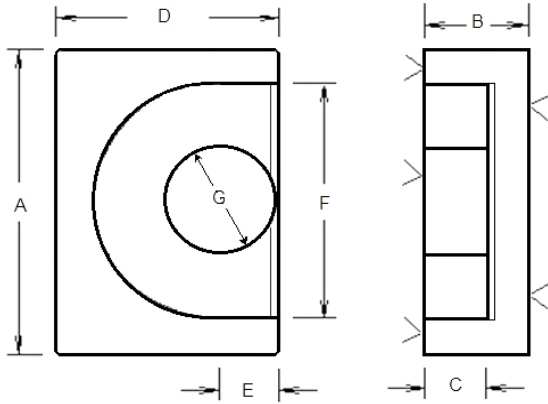


EP	1
EFD	2
PQ	3
RM	4
FM	5
POT Cores	6
SLAB Cores	7
CUP Cores	8
ROD / SLUGS	9
I-Bar / Blocks	10
ABOUT	11

F **FERRITE**
INTERNATIONAL
COMPANY
Mn Zn FERRITE CORES

EP CORES

2014-R1



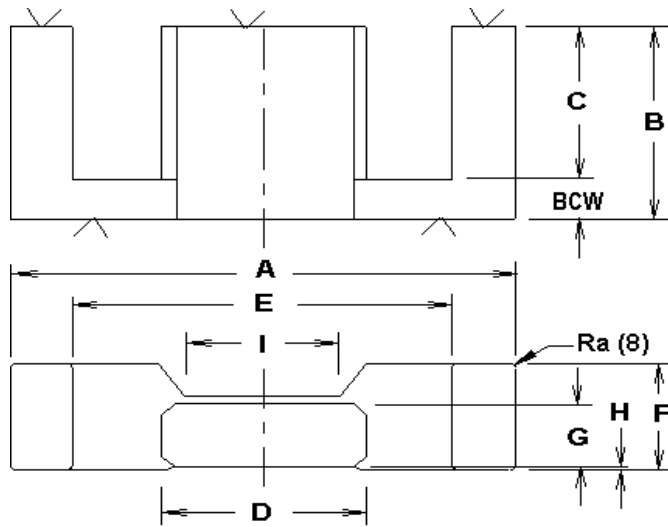
Catalog # Common Name	Dimensions [mm]								L_e mm	A_e mm ²	V_e mm ³	W_a mm ²	$W_a A_e$ mm ⁴	Set Weight Grams	No gap AL value +/- 25%			
	A +/- tol.	B +/- tol.	C +/- tol.	D +/- tol.	E +/- tol.	F +/- tol.	G +/- tol.	H +/- tol.							5099 7099 N001	7070	8040 50ALL	5kHF 5000
09-04-06 EP7	9.20 0.18	3.71 0.01	2.54 0.05	6.35 0.13	1.70 0.10	7.39 0.02	3.30 0.10		15.70	10.30	162.00	3.78	39	1.4	1,100	1,120	1,240	2,575
12-05-08 EP10	11.50 0.3	5.13 0.10	3.68 0.07	7.60 0.20	1.85 0.10	9.37 0.18	3.38 0.08		19.20	11.30	217.00	8.80	100	2.8	1,060	1,080	1,200	2,315
13-06-09 EP13	12.50 0.28	6.43 0.13	4.60 0.1	8.79 0.20	2.36 0.13	9.93 0.20	4.34 0.08		24.20	19.50	472.00	15.40	300	5.1	1,565	1,590	2,000	3,170
18-08-11 EP17	18.00 0.35	8.41 0.08	5.69 0.10	11.00 0.23	3.25 0.08	11.99 0.23	5.69 0.10		28.50	33.90	966.00	23.90	810	11.6	2,400	2,655	3,100	4,679
24-10-17 EP20	24.00 0.50	10.70 0.10	7.20 0.15	15.00 0.35	4.50 0.20	16.50 0.40	8.800 0.250		41.05	78.50	3,222	27.72	2176	26.5	CALL			

FERRITE International

39105 Magnetics Blvd Wadsworth, Illinois 60083 USA* 847 249 4900 * www.tscinternational.com

EFD CORES

2014-R1



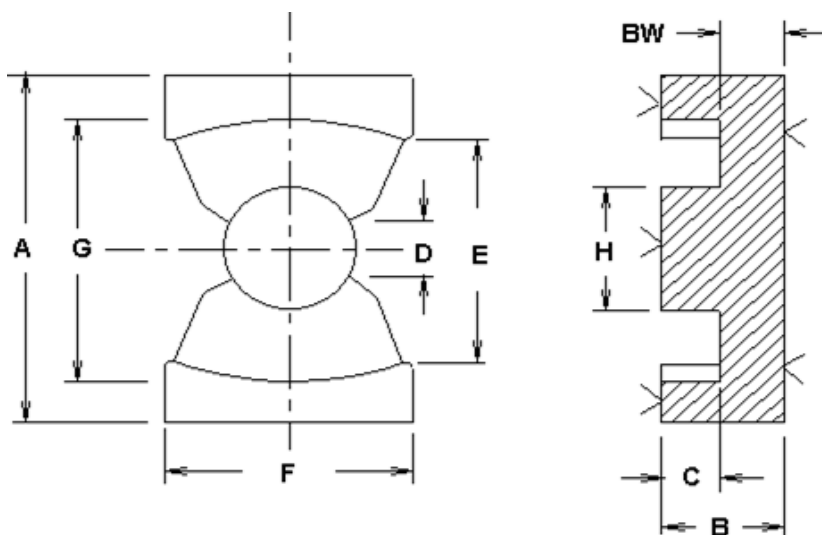
Catalog # Common Name	Dimensions [mm]								L _e mm	A _e mm ²	V _e mm ³	W _a mm ²	W _a A _e mm ⁴	Set Weight Grams	No gap AL value +/- 25%			
	A +/- tol.	B +/- tol.	C +/- tol.	D +/- tol.	E +/- tol.	F +/- tol.	G +/- tol.	H +/- tol.							5099 7099 N001	7070	8040 50ALL	5kHF 5000
11-05-03 EFD10	10.50 0.30	5.20 0.10	3.75 0.15	4.55 0.15	7.65 0.25	2.70 0.10	1.45 0.05		23.8	7.2	171	11.6	84	0.9	CALL			
12-06-04 EFD12	12.50 0.30	6.20 0.10	4.55 0.15	5.40 0.15	9.00 0.25	3.50 0.10	2.00 0.10		28.5	11.4	325	16.4	187	1.8	CALL			
15-08-05 EFD15	15.00 0.30	7.42 0.13	5.50 0.17	5.30 0.11	11.00 0.22	4.62 0.09	2.36 0.05		34.0	150.0	5,100	31.4	4,703	2.8	959	1,065	1,452	2,420
20-10-07 EFD20	20.00 0.40	10.00 0.13	7.70 0.17	8.90 0.18	15.40 0.31	6.65 0.13	3.60 0.07		47.0	310.0	14,570	50.1	15,516	7.1	1,566	1,740	2,349	3,955
25-13-09 EFD25	25.00 0.50	12.50 0.13	9.30 0.19	11.40 0.23	18.70 0.37	9.10 0.18	5.20 0.10		57.0	580.0	33,060	67.9	39,376	16.5	2,480	2,755	3,719	6,261
30-15-07 EFD30	30.00 0.60	15.00 0.13	11.20 0.20	14.60 0.29	22.40 0.45	9.10 0.18	4.90 0.10		68.0	690.0	46,920	87.4	60,278	22.7	2,471	2,745	3,706	6,239

FERRITE International

39105 Magnetics Blvd Wadsworth, Illinois 60083 USA * 847 249 4900 * FAX-4988 * www.tscinternational.com

PQ CORES

2014-R1



Catalog # Common Name	Dimensions [mm]								L _e mm	A _e mm ²	V _e mm ³	W _a mm ²	W _a A _e mm ⁴	Set Weight Grams	No gap AL value +/- 25%		
	A +/- tol.	B +/- tol.	C +/- tol.	D +/- tol.	E +/- tol.	F +/- tol.	G +/- tol.	H +/- tol.							5099 7099 N001	7070	8040 50ALL
20-16-00 PQ 20 16	21.26 0.43	8.10 0.13	5.16 0.19	4.01 min	11.99 min	14.00 0.28	18.01 0.36	8.84 0.18	37.4	62.0	2,319	47.3	2,934	11	3,295	3,625	4,943
20-20-00 PQ 20 20	21.26 0.43	10.11 0.13	7.16 0.19	4.01 min	11.99 min	14.00 0.28	18.01 0.36	8.84 0.18	45.4	62.0	2,815	65.7	4,071	14	2,720	2,992	4,080
26-20-00 PQ 26 20	27.25 0.55	10.08 0.13	5.74 0.21	5.99 min	15.49 min	19.00 0.38	22.50 0.45	11.99 0.24	46.3	119.0	5,510	60.3	7,179	27	5,675	6,243	8,513
26-25-00 PQ 26 25	27.25 0.55	12.37 0.13	8.05 0.21	5.99 min	15.49 min	19.00 0.38	22.50 0.45	11.99 0.24	55.5	118.0	6,549	84.6	9,983	32	4,690	5,159	7,035
32-20-00 PQ 32 20	33.02 0.66	10.29 0.13	5.74 0.22	5.49 min	19.00 min	22.00 0.44	27.51 0.55	13.46 0.27	55.5	170.0	9,435	80.6	13,710	46	7,215	7,937	10,823
32-30-00 PQ 32 30	33.02 0.66	15.16 0.13	10.64 0.22	5.49 min	19.00 min	22.00 0.44	27.51 0.55	13.46 0.27	74.6	161.0	12,011	149.5	24,068	58	4,760	5,236	7,140
35-35-00 PQ 35 35	36.12 0.72	17.37 0.13	12.50 0.22	5.97 min	23.50 min	26.01 0.52	32.000 0.64	14.350 0.29	87.9	196.0	17,228	220.6	43,243	84	4,915	5,407	7,373
40-40-00 PQ 40 40	41.48 0.83	19.86 0.13	14.76 0.22	6.35 min	27.99 min	27.99 0.56	37.010 0.74	14.91 0.30	101.9	201.0	20,482	326.2	65,565	99	4,640	5,104	6,960
50-50-00 PQ 50 50	51.00 1.02	25.00 0.13	18.05 0.22	8.15 min	32.00 min	32.00 0.64	44.000 0.88	20.000 0.40	113.2	327.7	37,096	433.2	141,960	180	CALL		

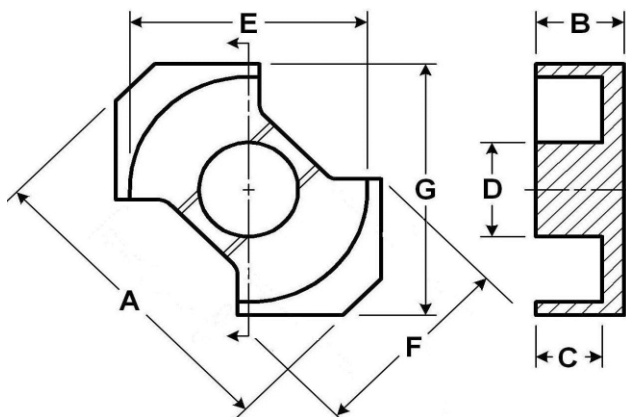
FERRITE International

39105 Magnetics Blvd Wadsworth, Illinois 60083 USA * 847 249 4900 * www.tscinternational.com

RM CORES

2015-R1

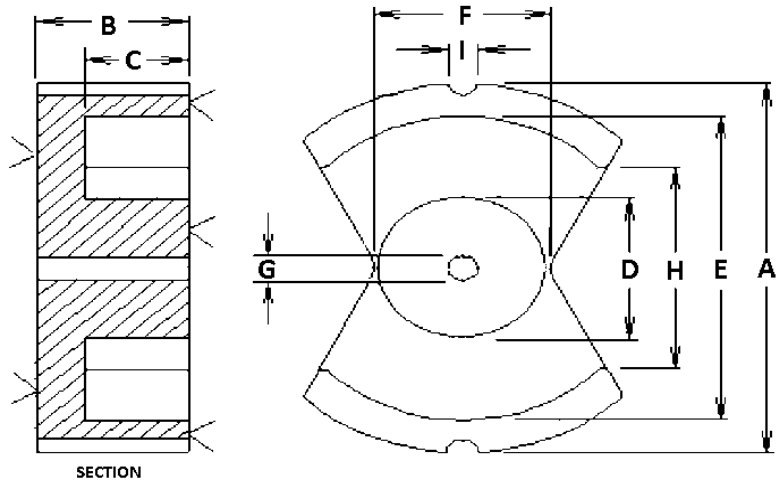
The "B" & "C" dimension can be made smaller than specified, Call for "B&C" Dimension larger than specified. Cores have standard notches on BW for clips.



Catalog #	Dimensions [mm]									Le	Ae	Ve	Wa	WaAe	Set Weight Grams	No gap AL value +/- 25%			
	A	B	C	D	E	F	G	H	5099 7099 N001							7070	8040 50ALL	5kHF 5000	
Common Name	+/- tol.	+/- tol.	+/- tol.	+/- tol.	+/- tol.	+/- tol.	+/- tol.	+/- tol.	+/- tol.	mm	mm^2	mm^3	mm^2	mm^4					
05-00-00 RM5	14.300 0.300	10.200 0.050	3.250 0.100	4.800 0.10	10.400 0.2	10.000 MAX	12.050 0.250			22.4	23.7	530	18.20	431	3.1	2,000	2,200	3,000	5,000
06-00-00 RM6	17.300 0.300	6.200 0.050	4.100 0.100	6.300 0.10	12.650 0.25	10.750 MAX	14.400 0.300			28.9	35.4	1020	26.04	922	5.2	2,500	2,750	3,750	6,250
07-00-00 RM7	19.900 0.400	6.700 0.050	4.325 0.250	7.100 0.15	15.050 0.3		16.900 0.300			31.2	46.4	1450	34.38	1595	7.6	CALL			
08-00-00 RM8	22.750 0.450	8.150 0.200	5.600 0.200	8.400 0.15	17.300 0.3	15.700 MAX	19.250 0.450			38.2	62.9	2410	49.84	3135	13.0	3,300	3,630	4,950	8,250
10-00-00 RM10	27.850 0.650	9.300 0.050	6.350 0.300	10.700 0.20	21.650 0.45		24.150 0.550			44.8	98.4	4410	69.53	6842	22.0	4,400	4,840	6,600	11,000
12-00-00 RM12	36.750 0.650	12.250 0.050	8.250 0.150	12.400 0.20	24.500 0.5		30.450 0.650			56.3	147	8250	99.83	14674	44.5	CALL			
14-00-00 RM14	41.500 0.700	14.450 0.050	10.550 0.150	14.700 0.30	29.600 0.6		34.100 0.600			68.8	189	13000	157.20	29710	70.0	6,300	6,930	9,450	15,750

FM CORES

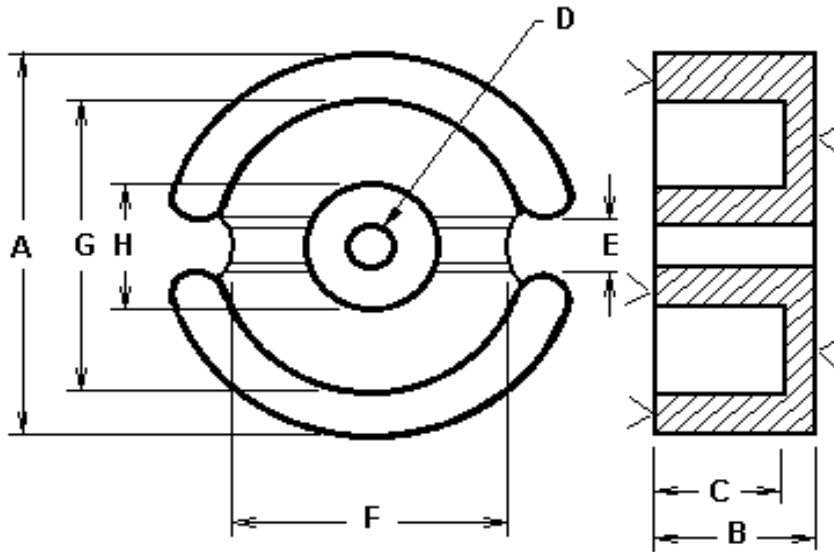
2014-R1



Catalog #	Dimensions [mm]										L_e	A_e	V_e	W_a	$W_a A_e$	Set Weight Grams	No gap AL value + 30% / - 20%		
	A	B	C	D	E	F	G	H	I	5099							7070	8040	
Common Name	+/- tol.	+/- tol.	+/- tol.	+/- tol.	+/- tol.	+/- tol.	+/- tol.	+/- tol.	+/- tol.	+/- tol.	mm	mm ²	mm ³	mm ²	mm ⁴				
50-39-00 FM50-39	49.150 0.850	19.400 0.127	13.400 0.200	19.700 0.30	39.650 0.65		5.550 0.150	23.400 min	4.500 0.20		87	340	29,600	267	90,892	140.0	6,930	7,623	9,148
62-49-00 FM62-49	61.011 1.219	24.384 0.102	16.891 0.127	25.095 0.50	49.530 1.00		5.486 0.10	29.489 min	4.500 0.20		109	570	62,000	413	235,255	280.0	8,280	9,200	11,040
74-59-00 FM74-59	72.750 1.250	29.350 0.400	20.750 0.400	29.000 0.50	58.400 1.00		5.550 0.150	34.000 min	4.200 0.20		127	790	101,000	610	481,940	460.0	CALL		
87-70-00 FM87-70	85.500 1.500	34.800 0.127	24.200 0.200	31.400 0.50	68.150 1.05		8.650 0.150	39.400 min	4.800 0.20		153	920	140,000	889	818,202	860.0	CALL		
114-93-00 FM114-93	111.750 2.250	46.250 0.400	31.900 0.400	42.300 0.70	89.850 1.05		5.600 0.200	52.000 min	5.500 0.20		199	1720	344,000	1,517	2,608,973	1,940.0	CALL		

POT CORES

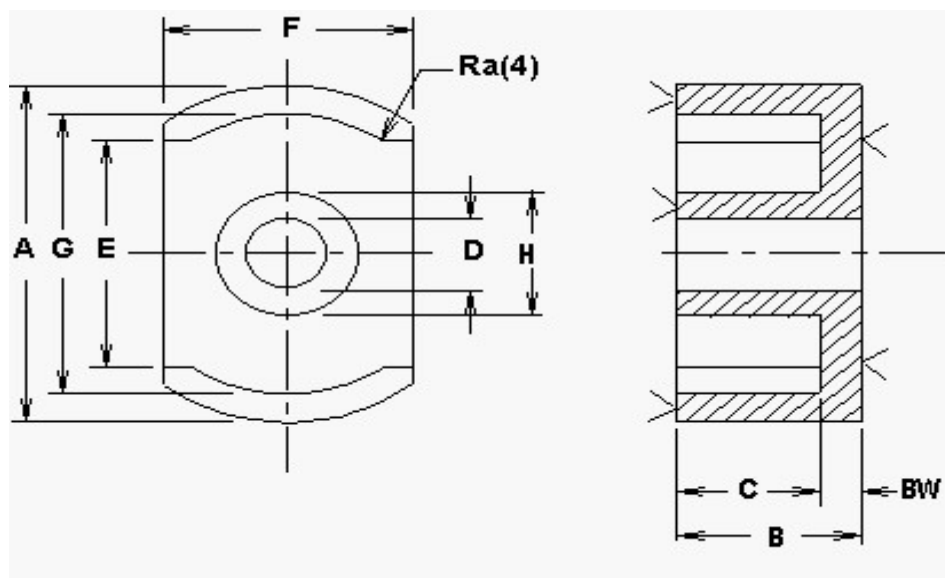
2015-R1



Catalog # Common Name	Dimensions [mm]								L _e mm	A _e mm ²	V _e mm ³	W _a mm ²	W _a A _e mm ⁴	Set Weight Grams	Ungapped AL value +/- 25%		
	A +/- tol.	B +/- tol.	C +/- tol.	D +/- tol.	E +/- tol.	F +/- tol.	G +/- tol.	H +/- tol.							N001 U _i 2000	7070 U _i 2200	50ALL U _i 3000
09-05-00	9.150 0.150	5.250 0.150	3.600 MIN	2.000 MIN	1.600 MIN	6.600 NOM	7.625 0.125	3.900 MAX	12.3	10.2	125	13.4	137	0.78	1,130	1,240	1,800
11-07-00	11.100 0.200	6.450 0.150	4.400 MIN	2.000 MIN	1.600 MIN	7.250 NOM	9.200 0.200	4.700 MAX	15.4	16.5	253	19.8	327	1.67	1,565	1,720	2,500
14-08-00	14.050 0.250	4.175 0.075	2.800 MIN	3.000 MIN	3.050 MIN	9.600 NOM	11.800	6.000 MAX	19.4	25.7	499	17.1	440	3.3	2,100	2,350	2,540
18-11-00	18.00 0.400	5.275 0.075	3.600 MIN	3.000 MIN	3.60 MIN	12.780 NOM	15.150 0.250	7.600 MAX	25.6	44.6	1,140	28.7	1,281	7.1	3,125	3,440	4,120
22-13-00	21.600 0.400	6.700 0.100	4.600 MIN	4.400 MIN	2.940 MIN	15.00 NOM	18.200 0.300	9.400 MAX	31.2	64.8	2,020	42.1	2,730	13.3	3,805	4,230	5,050
26-16-00	25.50 0.500	8.052 0.100	5.500 MIN	5.400 MIN	4.110 MIN	18.030 NOM	21.600 0.400	11.500 MAX	37.3	95.9	3,580	57.8	5,540	22.3	5,670	6,300	6,795
30-19-00	30.00 0.500	9.398 0.100	6.500 MIN	5.400 MIN	3.90 MIN	22.20 NOM	25.40 0.400	13.500 MAX	44.9	139.0	6,220	79.8	11,098	36.9	6,915	7,685	9,190
36-22-00	35.600 0.600	10.850 0.150	7.300 MIN	5.400 MIN	4.30 MIN	26.80 NOM	30.40 0.500	16.200 MAX	52.7	205.0	10,800	107.2	21,976	61.8	8,785	9,760	11,660
42-29-00	42.400 0.700	14.800 0.296	10.150 MIN	5.400 MIN	4.496 MIN	32.004 NOM	36.300 0.700	17.700 MAX	68.6	265.0	18,200	188.8	50,029	103.5	9,198	10,219	12,208
71-42-00	71.100 0.700	41.600 0.832	28.000 MIN	8.500 MIN	10.000 MIN	48.200 NOM	58.400 0.900	29.500 MAX	105.0	700.0	74,000	795	556,640	415.0	CALL		

SLAB CORES

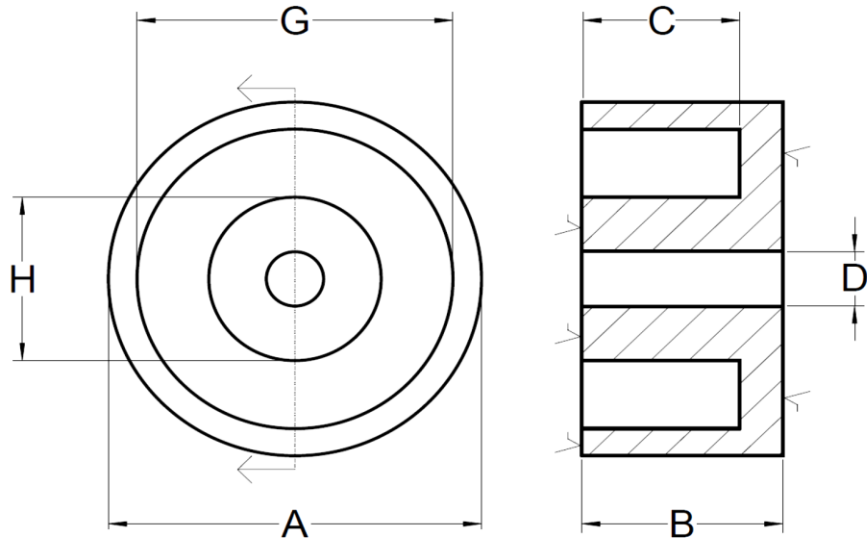
2014-R1



Catalog # Common Name	Dimensions [mm]								L _e mm	A _e mm ²	V _e mm ³	W _a mm ²	W _a A _e mm ⁴	Set Weight Grams	Ungapped AL value +/- 25%		
	A +/- tol.	B +/- tol.	C +/- tol.	D +/- tol.	E +/- tol.	F +/- tol.	G +/- tol.	H +/- tol.							N001 U _i 2000	7070 U _i 2200	50ALL U _i 3000
14-09-08	14.05 0.25	4.18 0.08	2.80 MIN	3.00 MIN	7.67 MIN	9.40 0.20	11.80 0.20	6.00 MAX	22.5	22.0	495.0	17.1	377.0	2.5	1,625	1,820	1,965
14-10-08	14.05 0.25	4.18 0.08	2.80 MIN		7.67 MIN	9.40 0.20	11.80 0.20	6.00 MAX	22.5	22.4	495.0	17.1	384.5	2.6	1,625	1,820	1,965
18-11-11	18.00 0.40	5.28 0.08	3.60 MIN	3.00 MIN	10.50 MIN	11.94 0.20	15.15 0.25	7.60 MAX	27.2	40.6	1110.0	28.7	1166.4	6.0	2,840	3,120	3,740
18-12-11	18.00 0.40	5.28 0.08	3.60 MIN		10.50 MIN	11.94 0.20	15.15 0.25	7.60 MAX	27.2	41.4	1110.0	28.7	1189.7	6.1	2,840	3,120	3,740
23-13-11	22.86 0.46	5.54 0.13	3.76 MIN	4.70 MIN	13.21 MIN	15.24 0.25	18.29 0.36	9.70 MAX	30.2	66.0	2000.0	32.3	2130.0	11.5	4,075	4,530	6,040
23-13-18	22.86 0.46	9.02 0.18	7.24 MIN	4.70 MIN	13.21 MIN	15.24 0.25	18.29 0.36	9.70 MAX	42.4	66.0	2750.0	62.1	4101.8	16.5	2,900	3,220	4,300

CUP CORES

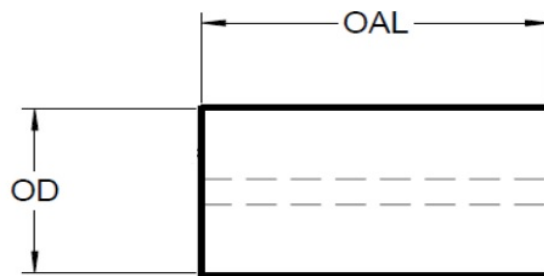
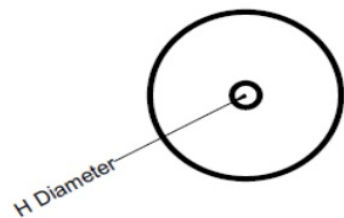
2014-R1



Catalog #	Dimensions [mm]								L_e mm	A_e mm ²	V_e mm ³	W_a mm ²	$W_a A_e$ mm ⁴	Set Weight Grams	Ungapped AL value +/- 25%		
	A +/- tol.	B +/- tol.	C +/- tol.	D +/- tol.	E +/- tol.	F +/- tol.	G +/- tol.	H +/- tol.							7099 U, 2000	7070 U, 2200	50ALL U, 3000
23-11-00	22.860 0.460	5.537 0.130	3.759 MIN	4.700 MIN			18.290 0.360	9.70 MAX									
23-18-00	22.860 0.460	9.017 0.180	7.239 MIN	4.700 MIN			18.290 0.360	9.70 MAX									

ROD & SLUG CORES

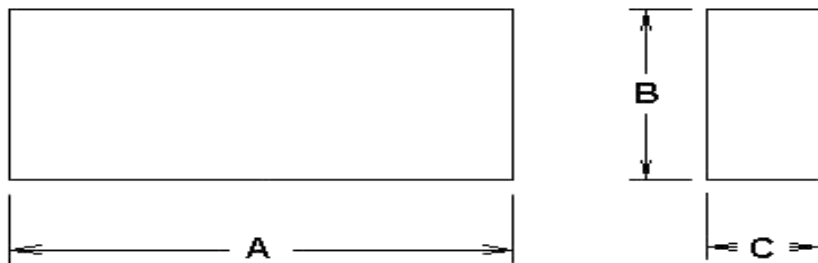
2014-R1



Catalog # Common Name	Dimensions [mm]				Ground Ends	L/D RATIO	Weight Grams										
	OD +/- tol.	OAL +/- tol.	H +/- tol.														
03-00-05	3.15 0.10	5.00 0.10			NO	1.6	0.2										
03-00-11	3.15 0.10	11.10 0.23			NO	3.5	0.4										
10-00-05	9.53 0.25	5.00 0.10			NO	0.5	1.8										
10-00-13	9.53 0.25	12.70 0.25			NO	1.3	4.5										
10-00-25	9.53 0.25	25.40 0.51			NO	2.7	8.8										
10-00-51	9.53 0.25	50.80 1.02			NO	5.3	17.5										
23-07-12	23.90 4.83	11.81 0.13	6.60 0.13		YES	0.5	27.2										
25-05-25	25.40 0.51	25.40 0.13	5.00 0.10		YES	1.0	56.9										
25-05-51	25.40 0.51	50.80 0.13	5.00 0.10		YES	2.0	113.9										

I-BAR / PLATE / BLOCK

2014-R1



Catalog #	Dimensions (mm)			TYPICAL GRIND										Weight			
Common Name	A +/- tol.	B +/- tol.	C +/- tol.														
14-02-05	14.00 0.28	1.50 0.05	5.00 0.08	B 2 Sides										0.5			
18-02-10	18.01 0.36	2.01 0.13	10.01 0.20	B 2 Sides										1.7			
22-03-17	21.59 0.43	2.49 0.13	15.88 0.30	B 2 Sides										4.1			
25-03-06	25.40 0.51	3.05 0.13	6.35 0.13	B 2 Sides										2.4			
26-04-05	26.06 0.52	4.01 0.13	4.57 0.13	B 2 Sides										2.3			
28-28-30	30.00 0.51	28.45 0.25	27.99 0.51	B 2 Sides										114.7			
32-03-20	31.80 0.64	3.20 0.13	20.32 0.41	B 2 Sides										9.9			
34-08-08	34.04 0.38	8.13 0.13	8.13 0.25	B 2 Sides										10.8			
35-05-10	34.93 0.69	4.75 0.13	9.53 0.18	B 2 Sides										7.6			
93-28-30	92.99 1.85	27.99 0.25	30.00 0.61	B 2 Sides										374.8			
102-25-25	101.60 2.03	25.40 0.25	25.40 0.51	B 2 Sides										314.6			
102-25-50	101.60 2.03	25.40 0.25	50.80 1.02	B 2 Sides										629.3			
102-03-12	101.60 2.03	3.18 0.13	12.70 0.25	B-C 4 Sides										19.7			
102-07-38	101.50 1.52	7.01 0.13	37.34 0.58	B 2 Sides										127.5			

FERRITE International

39105 Magnetics Blvd Wadsworth, Illinois 60083 USA* 847 249 4900 * www.tscinternational.com

History

Ferrite International was established 1985 as a division of Tempel Steel Company and was purchased in 1990 by Tempel Smith.

Quality Policy

To provide the highest value magnetic materials to our customers through a combination of exceptional quality, price, delivery and service.

Ferrite International is compliant to ISO 9000 1994.

International Environmental Regulatory Compliance

RoHS * REACH * ELV * WEEE * Halogen Free

Social Accountability Compliance

US Family and Medical Leave Act
US Environmental Protection Agency
US Clean Air Act
US National Primary Drinking Water Regulation

US Fair Labor Standards Act
US Occupational Safety and Health Administration
US Equal Employment Opportunity Commission
US Conflict Free Minerals

Warranty / Disclaimer

"TSC International" expressly warrants to the "Buyer" for whom it manufactures, sells and delivers product made of magnetic materials will conform to specifications and drawings as published within the product catalog. Buyer specifications that have not been approved by the International Electronic Commission shall be considered as a custom product, and will be warranted by TSC International in a separate written agreement.

There are no other express or implied warranties which extend beyond the above-referenced warranty of conformance to the specifications and specifically. TSC International does not warrant that any product will be merchantable or fit for the particular purpose for which the purchaser, its successors, agents or affiliates, intends to use product. Before using these products, buyer agrees to determine suitability of the product for their intended use or application.

Buyer shall notify TSC International in writing (and reasonable detail) of any defect in any product within thirty (30) days after the delivery date thereof. If products do not conform to the specification and TSC determines to its satisfaction that the parts are defective, and the defect is not due to misuse, accident or improper application, buyer's remedy shall be limited, at TSC international's sole discretion, to either (1) The return of such product in exchange for the return of, or credit for any payment received by TSC International relating thereto; (2) The replacement of such product; or (3) The repair of such product. TSC International shall pay reasonable shipping costs incurred in connection with the return, replacement or repair of any defective product. Solution to resolve defective product shall be within (60) days after written receipt of written notice from the buyer of such defect.

TSC International shall not be liable for any incidental or consequential loss, damage, or expense (including without limitation, economic loss or lost profits) of buyer for any defective product sold and delivered to the buyer regardless of whether such loss, damage or expense results from breach of contract or warranty or commission of tort (including, without limitation, strict liability or negligence).

These products are not designed for use in life support appliances, devices or systems where malfunction of these products can reasonably be expected to result in personal injury. Buyers that are using or selling these products for use in such applications do so at their own risk and agree to indemnify TSC International for any damages resulting from such application.