

Pyroferric

IRON POWDER CORES

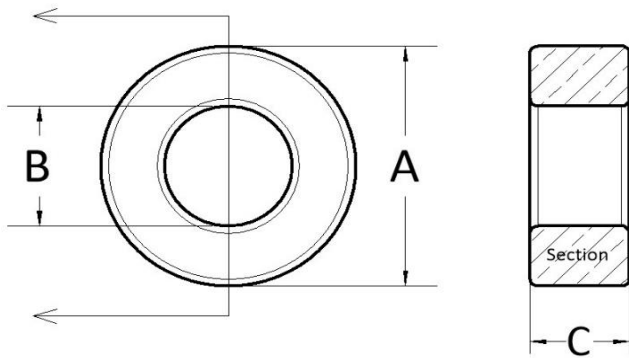
SIZE and SHAPE Catalog



Toroids 2-9
E-cores 10-13
Threaded Cores 14-18
Bobbin Cores 19
Plain / Rod Cores 20-21
Bead / Sleeve / Hollow Cores 22-23
Cup Cores 24

www.tscinternational.com

TOROIDS 1



TOROID PART NUMBERS

PT - SIZE - Material Code

Urethane Coating 0.004" - 0.007" Thickness
Parylene Coating Available

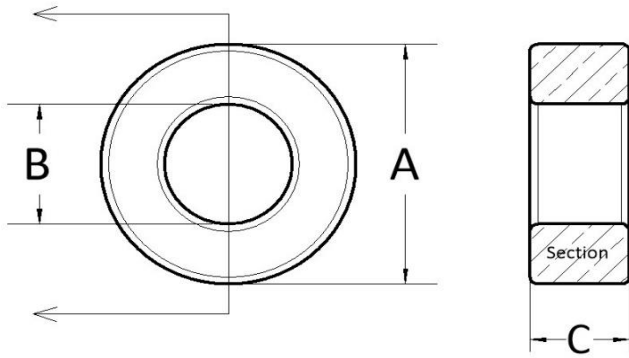
CATALOG #	Dimensions without coating					
	A		B		C	
	inches	mm	inches	mm	inches	mm
PT 125	0.125	3.18	0.062	1.57	0.050	1.27
PT 160	0.160	4.06	0.078	1.98	0.060	1.52
PT 200	0.200	5.08	0.088	2.24	0.067	1.70
PT 250	0.200	5.08	0.125	3.18	0.063	1.60
PT 250A	0.250	6.35	0.125	3.175	0.096	2.44
Tolerance	+/-0.005	+/- 0.13	+/-0.005	+/- 0.13	+/-0.005	+/- 0.13

CATALOG #	Core Parameters				
	L_e	A_e	V_e	W_a	$W_a A_e$
	mm	mm ²	mm ³	mm ²	mm ⁴
PT 125	6.88	0.97	6.70	1.95	1.89
PT 160	8.73	1.52	13.30	3.08	4.69
PT 200	10.30	2.30	23.69	3.92	9.03
PT 250	13.80	2.40	33.12	7.92	19.00
PT 250A	13.80	3.70	51.06	7.92	29.29

CATALOG #	A_L value nH/t^2 +/- 10%					
	-0	-W	-SF	-TH	-E	-C
	PT 125	0.33	1.10	1.30	1.55	1.70
PT 160	0.38	1.30	1.60	1.65	2.00	4.20
PT 200	0.44	1.60	2.10	2.20	2.50	5.20
PT 250	0.38	1.50	1.75	1.85	2.20	4.20
PT 250A	0.52	2.10	2.50	2.60	3.10	7.50

CATALOG #	A_L value nH/t^2 +/- 10%						
	-33	-35	-60	-67	-75	-85	-LL
	PT 125						
PT 160							
PT 200		7.8	14.5	16.5	18.5	20.0	17.5
PT 250		6.5	13.0	14.5	16.5	17.5	15.0
PT 250A		10.0	20.5	22.0	24.5	26.5	23.0

TOROIDS 2



TOROID PART NUMBERS

PT - SIZE - Material Code

Urethane Coating 0.004" - 0.007" Thickness
Parylene Coating Available

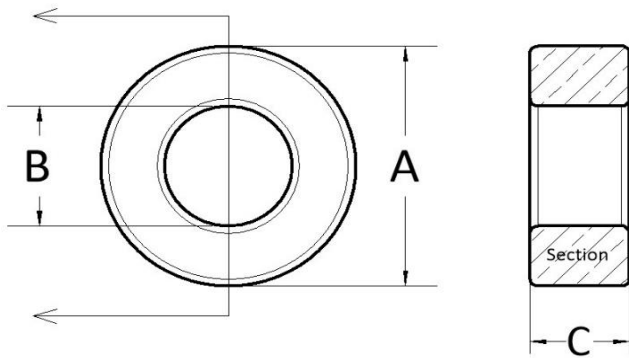
CATALOG #	Dimensions without coating					
	A		B		C	
	inches	mm	inches	mm	inches	mm
PT 260	0.260	6.60	0.105	2.67	0.187	4.75
PT 280	0.280	7.11	0.150	3.81	0.128	3.25
PT 310	0.310	7.87	0.156	3.96	0.125	3.18
PT 380	0.380	9.65	0.210	5.33	0.125	3.18
PT 381	0.380	9.65	0.175	4.45	0.190	4.83
PT 437	0.437	11.10	0.250	6.35	0.125	3.18
Tolerance	+/-0.010	+/- 0.25	+/-0.010	+/- 0.25	+/-0.010	+/- 0.25

CATALOG #	Core Parameters				
	L_e mm	A_e mm ²	V_e mm ³	W_a mm ²	$W_a A_e$ mm ⁴
PT 260	12.80	9.00	115.20	5.59	50.28
PT 280	16.10	5.20	83.72	11.40	59.28
PT 310	17.20	6.00	103.20	12.33	73.99
PT 380	22.20	6.70	148.74	22.35	149.7
PT 381	20.10	12.00	241.20	15.52	186.2
PT 437	26.00	7.30	189.80	31.67	231.2

CATALOG #	A_L value nH/t^2 +/- 10%					
	-0	-W	-SF	-TH	-E	-C
PT 260						
PT 280	0.50	2.10	2.60	2.70	3.20	6.30
PT 310	0.73	2.55	3.25	3.30	4.00	7.10
PT 380	0.55	2.30	2.80	3.00	3.40	7.00
PT 381						
PT 437	0.50	2.00	2.65	2.85	3.20	6.30

CATALOG #	A_L value nH/t^2 +/- 10%						
	-33	-35	-60	-67	-75	-85	-LL
PT 260		24.0	45.5	51.0	57.0	63.0	56.0
PT 280		11.5	20.0	22.0	25.0	26.5	24.0
PT 310		14.0	26.0	29.0	32.5	34.5	30.5
PT 380		12.0	22.0	24.5	27.5	29.5	26.0
PT 381		20.0	42.0	47.0	53.0	60.0	49.0
PT 437		11.5	21.0	23.0	26.0	28.0	24.5

TOROIDS 3



TOROID PART NUMBERS

PT - SIZE - Material Code

Urethane Coating 0.004" - 0.007" Thickness
Parylene Coating Available

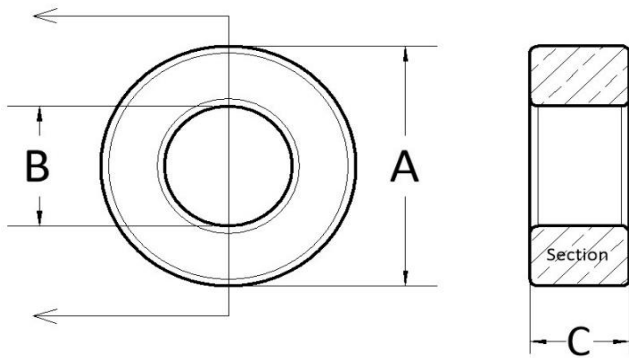
CATALOG #	Dimensions without coating					
	A		B		C	
	inches	mm	inches	mm	inches	mm
PT 440	0.440	11.18	0.230	5.84	0.160	4.06
PT 500	0.500	12.70	0.300	7.62	0.187	4.75
PT 500A	0.500	12.70	0.300	7.62	0.250	6.35
PT 500D	0.500	12.70	0.300	7.62	0.375	9.53
PT 501	0.500	12.70	0.200	5.08	0.250	6.35
PT 600	0.600	15.24	0.336	8.53	0.234	5.94
Tolerance	+/-0.010	+/- 0.25	+/-0.010	+/- 0.25	+/-0.010	+/- 0.25

CATALOG #	Core Parameters				
	L_e mm	A_e mm ²	V_e mm ³	W_a mm ²	$W_a A_e$ mm ⁴
PT 440	24.90	10.50	261.45	26.80	281.45
PT 500	30.60	11.80	361.08	45.60	538.12
PT 500A	30.60	15.80	483.48	45.60	720.54
PT 500D	30.60	23.70	725.22	45.60	1,080.8
PT 501	24.40	26.60	649.04	20.27	539.1
PT 600	35.30	19.40	684.82	57.21	1,109.8

CATALOG #	A_L value nH/t^2 +/- 10%					
	-0	-W	-SF	-TH	-E	-C
PT 440	0.70	2.95	4.00	4.60	5.00	10.50
PT 500	0.64	3.10	3.30	3.70	4.30	8.20
PT 500A						
PT 500D						
PT 501						
PT 600						

CATALOG #	A_L value nH/t^2 +/- 10%						
	-33	-35	-60	-67	-75	-85	-LL
PT 440		18.0	31.0	33.5	37.5	41.5	35.0
PT 500		17.5	29.5	30.0	34.0	38.5	33.0
PT 500A		23.0	39.0	43.5	46.5	52.5	43.5
PT 500D			57.5	64.0	72.0	77.0	66.0
PT 501			67.0	73.5	83.0	88.5	75.0
PT 600			41.5	45.0	51.0	55.0	47.0

TOROIDS 4



TOROID PART NUMBERS

PT - SIZE - Material Code

Urethane Coating 0.004" - 0.007" Thickness
Parylene Coating Available

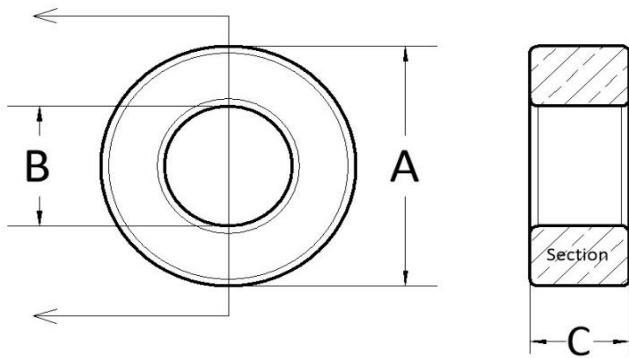
CATALOG #	Dimensions without coating					
	A		B		C	
	inches	mm	inches	mm	inches	mm
PT 600	0.600	15.24	0.336	8.53	0.234	5.94
PT 680	0.680	17.27	0.380	9.65	0.187	4.75
PT 680A	0.680	17.27	0.380	9.65	0.250	6.35
PT 680D	0.680	17.27	0.380	9.65	0.375	9.53
PT 720	0.720	18.29	0.280	7.11	0.260	6.60
Tolerance	+/-0.010	+/- 0.25	+/-0.010	+/- 0.25	+/-0.010	+/- 0.25

CATALOG #	Core Parameters				
	L_e mm	A_e mm ²	V_e mm ³	W_a mm ²	$W_a A_e$ mm ⁴
PT 600	35.30	19.40	684.8	57.21	1,110
PT 680	40.00	17.60	704.0	73.17	1,288
PT 680A	40.00	23.50	940.0	73.17	1,719
PT 680D	40.00	36.30	1,452	73.17	2,656
PT 720	34.50	34.30	1,183	39.73	1,363

CATALOG #	A_L value nH/t^2 +/- 10%					
	-0	-W	-SF	-TH	-E	-C
PT 600						
PT 680	0.62	3.20	4.10	4.55	4.90	10.40
PT 680A	0.80	4.30	5.70	6.00	6.85	13.00
PT 680D						
PT 720	0.68	3.30	4.15	4.70	5.40	10.80

CATALOG #	A_L value nH/t^2 +/- 10%						
	-33	-35	-60	-67	-75	-85	-LL
PT 600			41.5	45.0	51.0	55.0	47.0
PT 680	18.0		34.5	39.0	43.5	45.0	40.0
PT 680A	23.5		46.5	52.0	58.0	61.0	54.0
PT 680D	36.0		68.5	76.5	86.0	92.0	80.0
PT 720	36.0		72.5	81.0	90.5	97.5	82.0

TOROIDS 5



TOROID PART NUMBERS

PT - SIZE - Material Code

Urethane Coating 0.004" - 0.007" Thickness
Parylene Coating Available

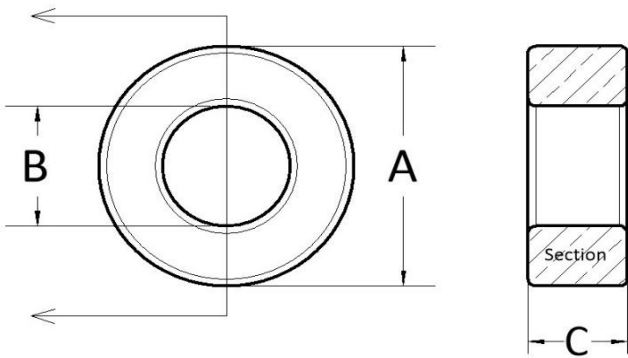
CATALOG #	Dimensions without coating					
	A		B		C	
	inches	mm	inches	mm	inches	mm
PT 800	0.800	20.32	0.500	12.70	0.250	6.35
PT 800A	0.800	20.32	0.500	12.70	0.375	9.53
PT 800D	0.800	20.32	0.500	12.70	0.500	12.70
PT 900	0.900	22.86	0.550	13.97	0.375	9.53
PT 940	0.940	23.88	0.560	14.22	0.312	7.92
PT 941	0.940	23.88	0.630	16.00	0.250	6.35
Tolerance	+/-0.010	+/- 0.25	+/-0.010	+/- 0.25	+/-0.010	+/- 0.25

CATALOG #	Core Parameters				
	L_e mm	A_e mm ²	V_e mm ³	W_a mm ²	$W_a A_e$ mm ⁴
PT 800	50.00	23.80	1,190	126.7	3,015
PT 800A	50.00	35.60	1,780	126.7	4,510
PT 800D	50.00	47.50	2,375	126.7	6,017
PT 900	55.60	41.50	2,307	153.3	6,361
PT 940	57.30	37.40	2,143	158.9	5,943
PT 941	59.80	21.50	1,286	201.1	4,324

CATALOG #	A_L value nH/t^2 +/- 10%					
	-0	-W	-SF	-TH	-E	-C
PT 800						
PT 800A						
PT 800D						
PT 900						
PT 940	0.98	4.60	6.10	6.50	7.70	15.00
PT 941	0.60	3.00	3.80	3.90	4.80	9.60

CATALOG #	A_L value nH/t^2 +/- 10%						
	-33	-35	-60	-67	-75	-85	-LL
PT 800	18.0		36.5	41.0	46.0	48.5	42.0
PT 800A	29.0		55.5	62.0	69.5	74.0	63.0
PT 800D	38.0		73.5	82.5	92.0	100.0	83.0
PT 900	30.0		56.5	63.0	70.5	77.5	64.0
PT 940	25.0		49.0	53.5	60.0	66.0	57.0
PT 941	16.0		30.5	34.0	38.0	41.0	35.0

TOROIDS 6



TOROID PART NUMBERS

PT - SIZE - Material Code

Urethane Coating 0.004" - 0.007" Thickness
Parylene Coating Available

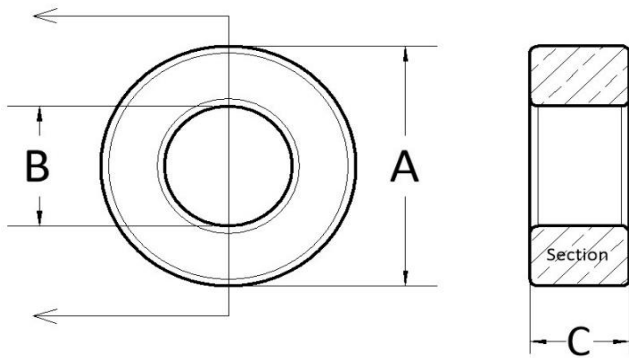
CATALOG #	Dimensions without coating					
	A		B		C	
	inches	mm	inches	mm	inches	mm
PT 1060	1.060	26.92	0.580	14.73	0.440	11.18
PT 1060A	1.060	26.92	0.580	14.73	0.575	14.61
PT 1060B	1.060	26.92	0.580	14.73	0.312	7.92
PT 1300	1.300	33.02	0.780	19.81	0.437	11.10
PT 1301	1.300	33.02	0.640	16.26	0.437	11.10
Tolerance	+/-0.015	+/- 0.38	+/-0.015	+/- 0.38	+/-0.015	+/- 0.38

CATALOG #	Core Parameters				
	L_e mm	A_e mm ²	V_e mm ³	W_a mm ²	$W_a A_e$ mm ⁴
PT 1060	61.60	66.10	4,072	170.5	11,267
PT 1060A	61.60	86.40	5,322	170.5	14,727
PT 1060B	61.60	46.90	2,889	170.5	7,994
PT 1300	79.50	71.70	5,700	308.3	22,104
PT 1301	71.30	89.20	6,360	207.5	18,513

CATALOG #	A_L value nH/t^2 +/- 10%					
	-0	-W	-SF	-TH	-E	-C
PT 1060	1.60	7.80	10.00	10.50	12.50	28.00
PT 1060A						
PT 1060B						
PT 1300			8.80	9.40	11.00	20.00
PT 1301						

CATALOG #	A_L value nH/t^2 +/- 10%						
	-33	-35	-60	-67	-75	-85	-LL
PT 1060	40.0		81.0	86.0	96.0	110.0	95.0
PT 1060A	56.0		106.0	114.0	128.0	145.0	124.0
PT 1060B	30.0		53.5	60.0	67.0	78.0	67.0
PT 1300	34.0		66.0	73.0	82.0	93.0	79.0
PT 1301	46.5		94.0	105.0	118.0	130.0	108.0

TOROIDS 7



TOROID PART NUMBERS

PT - SIZE - Material Code

Urethane Coating 0.004" - 0.007" Thickness
Parylene Coating Available

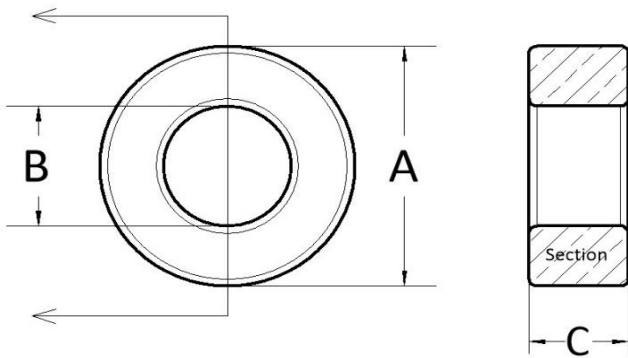
CATALOG #	Dimensions without coating					
	A		B		C	
	inches	mm	inches	mm	inches	mm
PT 1302	1.300	33.02	0.700	17.78	0.437	11.10
PT 1302A	1.300	33.02	0.700	17.78	0.217	5.51
PT 1510	1.510	38.35	0.845	21.46	0.437	11.10
PT 1570	1.570	39.88	0.955	24.26	0.570	14.48
PT 1750	1.750	44.45	1.070	27.18	0.650	16.51
Tolerance	+/-0.015	+/- 0.38	+/-0.015	+/- 0.38	+/-0.015	+/- 0.38

CATALOG #	Core Parameters				
	L_e mm	A_e mm ²	V_e mm ³	W_a mm ²	$W_a A_e$ mm ⁴
PT 1302	74.90	81.90	6,134	248.3	20,335
PT 1302A	74.90	40.70	3,048	248.3	10,105
PT 1510	88.90	91.00	8,090	361.8	32,924
PT 1570	96.70	111.00	10,734	462.1	51,296
PT 1750	108.10	139.70	15,102	580.1	81,044

CATALOG #	A_L value nH/t^2 +/- 10%					
	-0	-W	-SF	-TH	-E	-C
PT 1302						
PT 1302A						
PT 1510						
PT 1570			10.50	11.50	13.00	28.00
PT 1750			12.5	13.00	15.00	30.00

CATALOG #	A_L value nH/t^2 +/- 10%						
	-33	-35	-60	-67	-75	-85	-LL
PT 1302	43.5		83.0	92.0	103.0	112.0	95.0
PT 1302A	20.5		40.0	45.0	50.0	53.5	46.0
PT 1510	41.0		78.0	87.0	97.0	102.0	89.0
PT 1570	43.5		86.0	91.0	102.0	114.0	99.0
PT 1750	53.0		90.0	95.0	105.0	119.0	105.0

TOROIDS 8



TOROID PART NUMBERS

PT - SIZE - Material Code

Urethane Coating 0.004" - 0.007" Thickness
Parylene Coating Available

CATALOG #	Dimensions without coating					
	A		B		C	
	inches	mm	inches	mm	inches	mm
PT 1840	1.840	46.74	0.950	24.13	0.710	18.03
PT 2000	2.000	50.80	1.250	31.75	0.550	13.97
PT 2000B	2.000	50.80	1.250	31.75	1.000	25.40
PT 2250	2.250	57.15	1.400	35.56	0.550	13.97
PT 3000	3.040	77.22	1.930	49.02	0.500	12.70
PT 3000D	3.040	77.22	1.930	49.02	1.000	25.40
Tolerance	+/-0.015	+/- 0.38	+/-0.015	+/- 0.38	+/-0.015	+/- 0.38

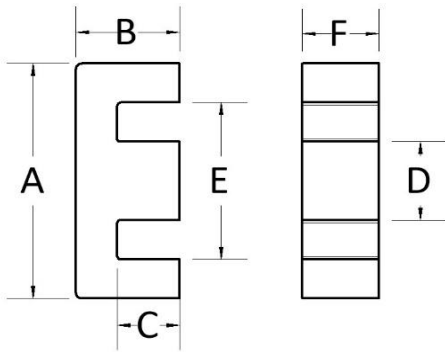
CATALOG #	Core Parameters				
	L_e mm	A_e mm ²	V_e mm ³	W_a mm ²	$W_a A_e$ mm ⁴
PT 1840	103.60	197.00	20,409	457.3	90,089
PT 2000	125.00	131.00	16,375	791.7	103,717
PT 2000B	125.00	238.00	29,750	791.7	188,432
PT 2250	140.30	148.00	20,764	993.1	146,986
PT 3000	191.63	176.00	33,727	1887.4	332,189
PT 3000D	191.63	352.00	67,454	1887.4	664,377

CATALOG #	A_L value nH/t^2 +/- 10%					
	-0	-W	-SF	-TH	-E	-C
PT 1840			17.50	20.00	23.50	50.00
PT 2000			9.50	10.50	12.00	24.00
PT 2000B						
PT 2250						
PT 3000						
PT 3000D						

CATALOG #	A_L value nH/t^2 +/- 10%						
	-33	-35	-60	-67	-75	-85	-LL
PT 1840	70.0		143.0	152.0	170.0	192.0	159.0
PT 2000	37.0		79.0	83.0	93.0	105.0	92.0
PT 2000B	70.0		128.0	143.0	160.0		155.0
PT 2250	37.0		78.0	88.0	98.0		92.0
PT 3000	38.0			71.0	80.0		80.0
PT 3000D	76.0			142.0	160.0		160.0

E-CORES 1

E-CORE PART NUMBERS
PE - SIZE - Material Code



Catalog #	Dimensions					
	A		B		C	
	in	mm	in	mm	in	mm
PE 51	0.498	12.65	0.252	6.40	0.184	4.66
PE 63	0.634	16.10	0.317	8.04	0.233	5.91
PE 75	0.750	19.05	0.318	8.06	0.223	5.65
PE 80	0.795	20.19	0.392	9.96	0.275	6.99
PE 99	1.000	25.40	0.500	12.70	0.345	8.76
Tolerance	± .010	± 0.25	± .005	± 0.13	± .005	± 0.13

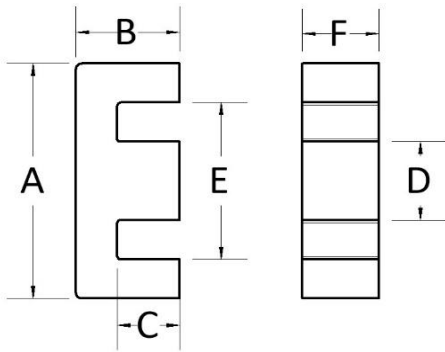
Catalog #	Dimensions					
	D		E		F	
	in	mm	in	mm	in	mm
PE 51	0.140	3.54	0.362	9.19	0.140	3.54
PE 63	0.180	4.56	0.457	11.60	0.178	4.51
PE 75	0.187	4.75	0.562	14.27	0.187	4.75
PE 80	0.230	5.84	0.575	14.61	0.228	5.79
PE 99	0.287	7.29	0.695	17.65	0.287	7.29
Tolerance	± .007	± 0.18	± .007	± 0.18	± .007	± 0.18

Catalog #	Core Parameters				
	L_e mm	A_e mm ²	V_e mm ³	W_a mm ²	$W_a A_e$ mm ⁴
PE 51	29.79	12.40	369.4	26.34	326.6
PE 63	37.60	20.10	755.8	41.55	835.2
PE 75	39.71	22.70	901.4	53.83	1,222
PE 80	45.83	33.40	1,531	61.21	2,044
PE 99	57.45	55.44	3,185	90.81	5,035

Catalog #	AL value $nH/t2 \pm 10\%$		
	-67	-75	-LL
PE 51	40	45.5	44
PE 63	51	60	56
PE 75	57	64	59
PE 80	65	73	70
PE 99	81	96	96

E-CORES 2

E-CORE PART NUMBERS
PE - SIZE - Material Code



Catalog #	Dimensions					
	A		B		C	
	in	mm	in	mm	in	mm
PE 100	1.000	25.40	0.375	9.53	0.250	6.35
PE 118	1.185	30.10	0.593	15.05	0.391	9.93
PE 137	1.375	34.93	0.563	14.29	0.375	9.53
PE 162	1.625	41.28	1.342	34.09	0.421	10.69
Tolerance	± .010	± 0.25	± .005	± 0.13	± .005	± 0.13

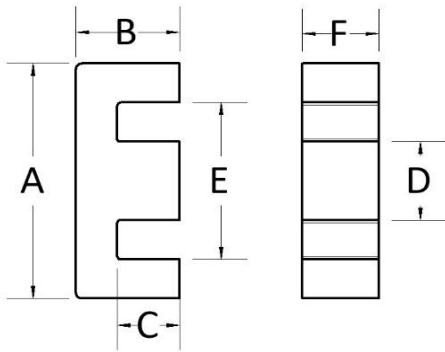
Catalog #	Dimensions					
	D		E		F	
	in	mm	in	mm	in	mm
PE 100	0.250	6.35	0.750	19.05	0.248	6.30
PE 118	0.278	7.06	0.782	19.86	0.276	7.01
PE 137	0.375	9.53	1.000	25.40	0.375	9.53
PE 162	0.500	12.70	1.125	28.58	0.500	12.70
Tolerance	± .007	± 0.18	± .007	± 0.18	± .007	± 0.18

Catalog #	Core Parameters				
	L_e	A_e	V_e	W_a	$W_a A_e$
	mm	mm ²	mm ³	mm ²	mm ⁴
PE 100	48.07	40.00	1,922.8	80.65	3,226
PE 118	65.39	60.50	3,956.1	127.14	7,692
PE 137	68.96	90.80	6,261.6	151.21	13,730
PE 162	78.60	161.30	12,678	169.76	27,382

Catalog #	AL value $nH/t2 \pm 10\%$		
	-67	-75	-LL
	PE 100	82	92
PE 118	80	90	90
PE 137	120	134	131
PE 162	188	210	199

E-CORES 3

E-CORE PART NUMBERS
PE - SIZE - Material Code



Catalog #	Dimensions					
	A		B		C	
	in	mm	in	mm	in	mm
PE 168	1.685	42.80	0.830	21.08	0.605	15.37
PE 168A	1.685	42.80	0.830	21.08	0.605	15.37
Tolerance	± .010	± 0.25	± .005	± 0.13	± .005	± 0.13

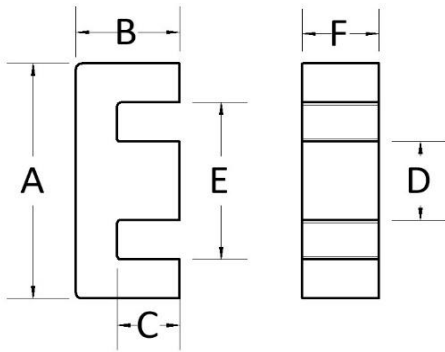
Catalog #	Dimensions					
	D		E		F	
	in	mm	in	mm	in	mm
PE 168	0.475	12.07	1.210	30.73	0.590	14.99
PE 168A	0.475	12.07	1.210	30.73	0.787	19.99
Tolerance	± .007	± 0.18	± .010	± 0.25	± .010	± 0.25

Catalog #	Core Parameters				
	L_e mm	A_e mm ²	V_e mm ³	W_a mm ²	$W_a A_e$ mm ⁴
PE 168	48.07	40.00	1,923	286.9	11,475
PE 168A	65.39	60.50	3,956	286.9	17,357

Catalog #	AL value $nH/t2 \pm 10\%$		
	-67	-75	-LL
PE 168	98.54	178	17540
PE 168A	98.54	237.4	23393

E-CORES 4

E-CORE PART NUMBERS
PE - SIZE - Material Code



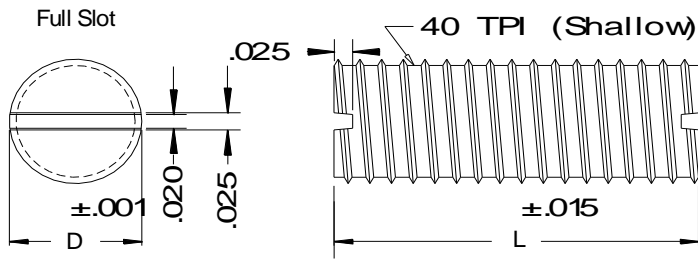
Catalog #	Dimensions					
	A		B		C	
	in	mm	in	mm	in	mm
PE 187	1.875	47.63	0.782	19.86	0.469	11.91
Tolerance	± .010	± 0.25	± .005	± 0.13	± .005	± 0.13

Catalog #	Dimensions					
	D		E		F	
	in	mm	in	mm	in	mm
PE 187	0.625	15.88	1.249	31.72	0.625	15.88
Tolerance	± .005	± 0.13	± .010	± 0.25	± .010	± 0.25

Catalog #	Core Parameters				
	L_e mm	A_e mm ²	V_e mm ³	W_a mm ²	$W_a A_e$ mm ⁴
PE 187	88.47	252.30	22,321	188.8	47,637

Catalog #	AL value $nH/t2 \pm 10\%$		
	-67	-75	-LL
PE 187	240	268	260

4-40 THREADED CORES



SPECIFICATIONS

Electrical values based upon *PYROFERRIC's* standard

Q tolerance $\pm 7 \frac{1}{2} \%$

Permeability Tolerance $\pm 4 \%$

Any length available in range 0.125 to 0.375 inches.

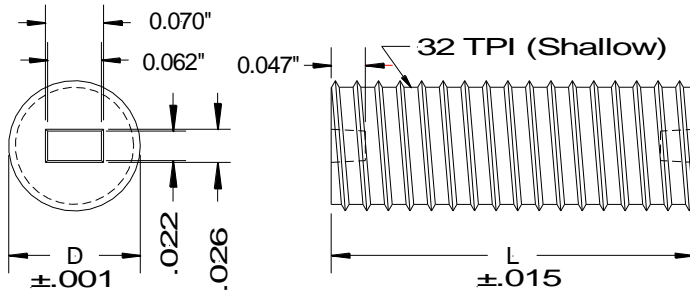
Teflon Coating Available

THREADED CORE PART NUMBERS

P1 - Indexed Size & Material

D	L	Materials and Part Numbers					
		E	TH	SF	J	W	C
in.	in.						
0.109	0.187	P1-3401	P1-3405	P1-3409	P1-3413	P1-3417	P1-3424
	0.250	P1-3402	P1-3406	P1-3410	P1-3414	P1-3418	P1-3425
	0.312	P1-3403	P1-3407	P1-3411	P1-3415	P1-3419	P1-3426
	0.375	P1-3404	P1-3408	P1-3412	P1-3416	P1-3420	P1-3427
Test Frequency		10 MHz	40 MHz	40 MHz	40 MHz	100 MHz	10 MHz

6-32 THREADED CORES



SPECIFICATIONS

Electrical values based upon *PYROFERRIC's* standard

Q tolerance $\pm 7 \frac{1}{2} \%$

Permeability Tolerance $\pm 4 \%$

Any length available in range 0.125 to 0.500 inches.

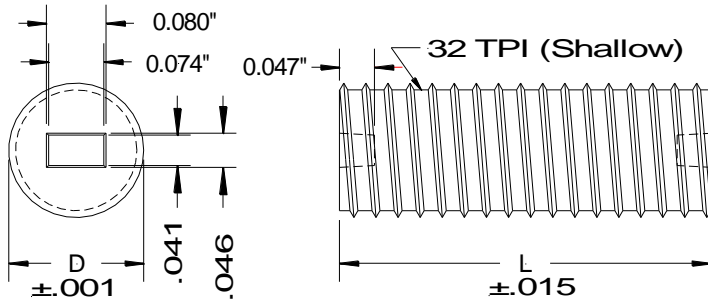
Teflon Coating Available

THREADED CORE PART NUMBERS

P1 - Indexed Size & Material

D	L	Materials and Part Numbers					
		E	TH	SF	J	W	C
in.	in.						
0.129	0.187	P1-2343	P1-2392	P1-2391	P1-2386	P1-2828	P1-3444
	0.250	P1-2334	P1-2640	P1-2393	P1-1943	P1-2802	P1-2808
	0.312	P1-2297	P1-3433	P1-3436	P1-2298	P1-2389	P1-2296
	0.375	P1-2294	P1-3434	P1-2339	P1-2295	P1-2384	P1-2293
	0.500	P1-3432	P1-3435	P1-3437	P1-2373	P1-3438	P1-3445
Test Frequency		10 MHz	40 MHz	40 MHz	40 MHz	100 MHz	10 MHz

8-32 THREADED CORES



SPECIFICATIONS

Electrical values based upon *PYROFERRIC's* standard

Q tolerance $\pm 7 \frac{1}{2} \%$

Permeability Tolerance $\pm 4 \%$

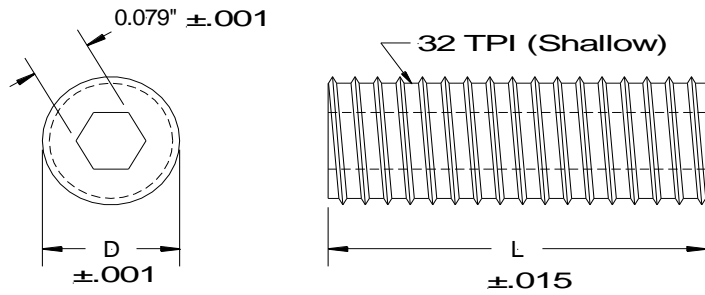
Any length available in range 0.125 to 0.500 inches.

Teflon Coating Available

THREADED CORE PART NUMBERS

P1 - Indexed Size & Material

D	L	Materials and Part Numbers					
		E	TH	SF	J	W	C
in.	in.						
0.160	0.187	P1-2658	P1-2337	P1-2647	P1-2589	P1-3457	P1-3466
	0.250	P1-2261	P1-3451	P1-1988	P1-2422	P1-3458	P1-3467
	0.312	P1-3449	P1-2872	P1-2873	P1-3454	P1-3459	P1-3468
	0.375	P1-2262	P1-2874	P1-1116	P1-3455	P1-3460	P1-3469
	0.500	P1-3450	P1-3452	P1-3453	P1-3456	P1-3461	P1-3470
Test Frequency		10 MHz	40 MHz	40 MHz	40 MHz	100 MHz	10 MHz



10-32 THREADED CORES

SPECIFICATIONS

Electrical values based upon *PYROFERRIC's* standard

Q tolerance $\pm 7 \frac{1}{2} \%$

Permeability Tolerance $\pm 4 \%$

Any length available in range 0.125 to 0.500 inches.

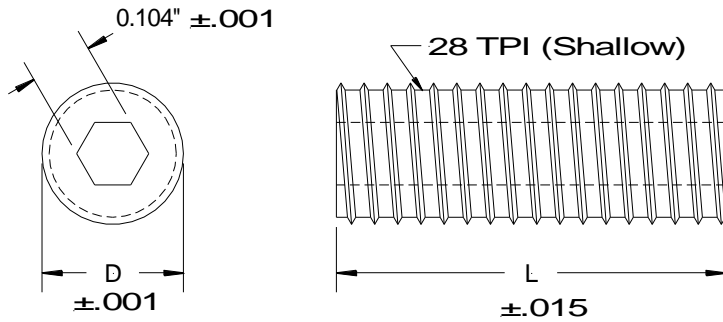
Teflon Coating Available

THREADED CORE PART NUMBERS

P1 - Indexed Size & Material

D	L	Materials and Part Numbers					
		E	TH	SF	J	W	C
in.	in.						
0.181	0.187	P1-1925	P1-3481	P1-3484	P1-3487	P1-3488	P1-3498
	0.250	P1-1934	P1-2858	P1-2362	P1-2139	P1-3489	P1-1948
	0.312	P1-2037	P1-1929	P1-2179	P1-1921	P1-3490	P1-1947
	0.375	P1-2051	P1-2860	P1-2361	P1-2070	P1-2856	P1-2309
	0.437	P1-1944	P1-2824	P1-3485	P1-2810	P1-3491	P1-2882
	0.500	P1-2323	P1-3482	P1-2375	P1-1937	P1-3492	P1-2329
	0.625	P1-2317	P1-3483	P1-3486	P1-2332	P1-3493	P1-2850
Test Frequency		10 MHz	40 MHz	40 MHz	40 MHz	100 MHz	10 MHz

14-28 THREADED CORES



SPECIFICATIONS

Electrical values based upon *PYROFERRIC's* standard

Q tolerance $\pm 7 \frac{1}{2} \%$

Permeability Tolerance $\pm 4 \%$

Any length available in range 0.125 to 0.500 inches.

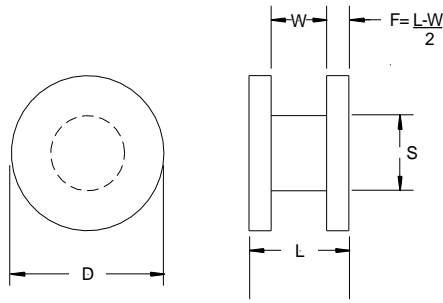
Teflon Coating Available

THREADED CORE PART NUMBERS

P1 - Indexed Size & Material

D	L	Materials and Part Numbers					
		E	TH	SF	J	W	C
in.	in.						
0.249	0.250	P1-5111	P1-5112	P1-1942	P1-1938	P1-2350	P1-3535
	0.312	P1-1912	P1-3518	P1-3520	P1-2335	P1-3525	P1-3536
	0.375	P1-5101	P1-5110	P1-2360	P1-5113	P1-2385	P1-2071
	0.437	P1-2379	P1-3519	P1-3521	P1-3523	P1-1401	P1-3537
0.248	0.500	P1-5109	P1-2344	P1-2341	P1-5115	P1-3526	P1-2848
	0.625	P1-5106	P1-2883	P1-2803	P1-1919	P1-3527	P1-2849
0.249	0.750	P1-1776	P1-1238	P1-3522	P1-3524	P1-3528	P1-3538
Test Frequency		10 MHz	40 MHz	40 MHz	40 MHz	100 MHz	10 MHz

PLAIN BOBBIN



PYROFERRIC manufactures more than 200 various bobbin cores, both of its own design and to customer's specifications. All bobbin cores are electrically controlled to a wound bobbin inductance value, within narrow tolerance limits.

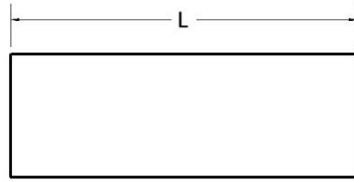
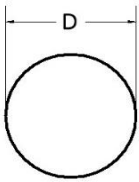
BOBBIN CORE PART NUMBERS

P2 - Indexed Size & Material

Catalog #			Dimensions inches			
SF	E	35	D	L	W	S
P2-4212	P2-4211	P2-4512	0.047	0.075	0.035	0.028
P2-2513	P2-2512	P2-4866	0.063	0.105	0.045	0.033
P2-2942	P2-2943	P2-3062	0.080	0.100	0.045	0.045
P2-3063	P2-2610	P2-3064	0.093	0.090	0.040	0.050
P2-2983	P2-2480	P2-3065	0.100	0.110	0.055	0.050
P2-3203	P2-3202	P2-4718	0.125	0.125	0.051	0.063
P2-1152	P2-1767	P2-4665	0.147	0.147	0.068	0.070
P2-3068	P2-3206	P2-3069	0.187	0.160	0.080	0.076
P2-2691	P2-3205	P2-4937	0.200	0.250	0.127	0.128
P2-1972	P2-1598	P2-4094	0.250	0.187	0.063	0.093
P2-3072	P2-1063	P2-3073	0.250	0.225	0.125	0.098
P2-2799	P2-1459	P2-3074	0.310	0.250	0.125	0.140
P2-2798	P2-1029	P2-3075	0.350	0.250	0.140	0.167
P2-3076	P2-2673	P2-3077	0.375	0.445	0.250	0.250
P2-3078	P2-3204	P2-3079	0.437	0.281	0.157	0.219
P2-3080	P2-1313	P2-3081	0.500	0.250	0.125	0.250

Catalog #			Wa	MTL	AL value nH/t2		
SF	E	35	mm ²	mm	SF	E	35
P2-4212	P2-4211	P2-4512	0.215	2.865	20.8	21.6	28.4
P2-2513	P2-2512	P2-4866	0.435	3.840	29.6	32.0	41.6
P2-2942	P2-2943	P2-3062	0.508	4.999	38.0	39.6	54.0
P2-3063	P2-2610	P2-3064	0.555	5.700	51.2	54.0	66.0
P2-2983	P2-2480	P2-3065	0.887	5.974	40.8	47.6	64.0
P2-3203	P2-3202	P2-4718	1.02	7.498	66.0	69.2	90.7
P2-1152	P2-1767	P2-4665	1.69	8.656	61.9	69.9	84.5
P2-3068	P2-3206	P2-3069	2.86	10.485	66.0	68.0	86.3
P2-2691	P2-3205	P2-4937	2.95	13.076	100.0	105.0	135.0
P2-1972	P2-1598	P2-4094	3.19	13.686	105.3	129.4	165.2
P2-3072	P2-1063	P2-3073	6.13	13.868	77.5	92.4	117.0
P2-2799	P2-1459	P2-3074	6.85	17.953	115.8	145.5	180.8
P2-2798	P2-1029	P2-3075	8.26	20.635	159.2	167.6	210.0
P2-3076	P2-2673	P2-3077	10.08	24.933	194.2	205.0	280.1
P2-3078	P2-3204	P2-3079	11.04	26.152	192.0	200.0	252.0
P2-3080	P2-1313	P2-3081	10.08	29.931	246.9	314.0	393.7

PLAIN CORES 1



SPECIFICATIONS

Electrical values based upon *PYROFERRIC's* standard core at the specified test frequency.

Permeability Tolerance $\pm 4\%$
Q tolerance $\pm 7\frac{1}{2}\%$

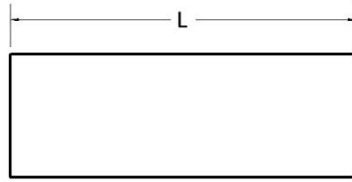
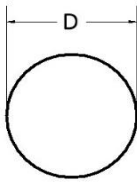
OD	+/-
< 0.875"	±0.0025"
> 0.875"	±0.0050"

L	+/-
< 0.625"	0.010"
0.625" - 0.875"	0.015"
> 1.000"	0.020"

PLAIN CORE PART NUMBERS

P3 - Indexed Size & Material

D in.	L in.	L/D Ratio	CATALOG #								
			E	TH	SF	J	W	C	-60	-67	-75
Test Frequency			10 MHz	40 MHz	40 MHz	40 MHz	100 MHz	10 MHz	<700KHz	<700KHz	<700KHz
0.060	0.328	5.5	P3-1866								
0.062	0.035	0.6			P3-2743						
	0.175	2.8			P3-2606						
	0.187	3.0				P5-3972					
	0.187	3.0	P3-4565								
0.080	0.200	2.5			P3-3643						
	0.230	2.9			P3-3655						
	0.275	3.4	P3-4647								
0.100	0.250	2.5				P3-1536					
	0.312	3.1			P3-1809						
	0.500	5.0				P3-2152					
0.105	0.170	1.6					P3-2497				
	0.200	1.9					P3-2146				
	0.230	2.2					P3-1058				
	0.250	2.4	P3-2258					P3-2324			
	0.315	3.0	P3-4657								
	0.360	3.4	P3-1931					P3-1661			
0.120	0.270	2.3					P3-2740				
	0.300	2.5					P3-2662				
	0.345	2.9					P3-2135				
	0.500	4.2	P3-2929	P3-1426							
0.125	0.170	1.4					P3-2277				
	0.230	1.8					P3-1058				
	0.375	3.0	P3-3696					P3-3169			
0.145	0.375	2.6	P3-1523								
	0.445	3.1	P3-1878								
	0.455	3.1	P3-4836								
	0.625	4.3	P3-2690								
0.170	0.375	2.2	P3-1940								
	0.500	2.9	P3-1978								
0.187	0.255	1.4				P3-3575					
	0.312	1.7		P3-2583							
	0.500	2.7				P3-3580		P3-3566			
	0.750	4.0							P3-2693		
0.195	0.625	3.2	P3-1830								
	0.750	3.8	P3-1771								
0.245	0.750	3.1			P3-2595				P3-2697		
	1.000	4.1		P3-2057					P3-2060		
	1.250	5.1	P3-1091						P3-4300		



PLAIN CORES 2

SPECIFICATIONS

Electrical values based upon *PYROFERRIC's* standard core at the specified test frequency.

Permeability Tolerance $\pm 4\%$

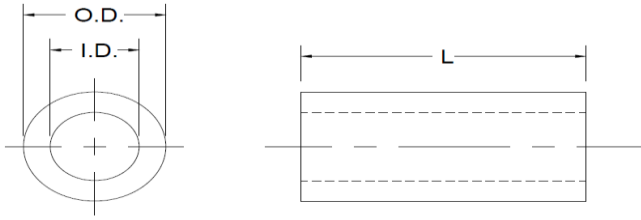
Q tolerance $\pm 7\frac{1}{2}\%$

PLAIN CORE PART NUMBERS

P3 - Indexed Size & Material

OD	+/-	L	+/-
< 0.875"	0.0025"	< 0.625"	0.010"
> 0.875"	0.0050"	0.625" - 0.875"	0.015"
		> 1.000"	0.020"

D in.	L in.	L/D Ratio	CATALOG #								
			E	TH	SF	J	W	C	-60	-67	-75
Test Frequency			10 MHz	40 MHz	40 MHz	40 MHz	100 MHz	10 MHz	<700KHz	<700KHz	<700KHz
0.250	0.500	2.0	P3-1859								
	0.750	3.0			P3-2595				P3-4689	P3-4880	
	0.875	3.5						P3-3794			
	1.000	4.0	P3-2057	P3-1133						P3-4456	
	1.125	4.5									P3-4768
	1.250	5.0	P3-1091						P3-4859	P3-4318	
0.365	0.375	1.0	P3-1466								
	0.500	1.4	P3-2270								
	0.750	2.1		P3-1002		P3-1547					
	0.875	2.4		P3-2229							
	1.000	2.7		P3-1398	P3-2163						
0.375	0.750	2.0		P3-3664							
	1.000	2.7	P3-3607							P3-4777	
	1.190	3.2	P3-4901								
	1.250	3.3								P3-4892	
	1.500	4.0	P3-4841			P3-1547					
0.433	0.625	1.4						P3-1507			
0.500	0.440	0.9	P3-4145								
	0.750	1.5	P3-4702								
	1.000	2.0	P3-3606							P3-4842	
	1.125	2.3						P3-1571			
	1.375	2.8	P3-4656							P3-4819	
	1.500	3.0	P3-4194								
	2.000	4.0									P3-3680
0.630	0.380	0.6	P3-4906								
0.750	0.437	0.6	P3-2443								
	1.000	1.3	P3-2594							P3-4867	
	1.250	1.7	P3-4808								
	1.500	2.0							P3-4752		
	1.000	1.0	P3-4747						P4-4879		
1.000	1.250	1.3	P3-4807								
	1.500	1.5		P3-4887	P3-4888				P3-4831		
	1.500	1.0	P3-4926								
1.500	1.250	0.8	P3-4926								
	1.500	1.0	P3-2970								



BEAD, SLEEVE, HOLLOW CORES 1

SPECIFICATIONS

OD +/- 0.0025

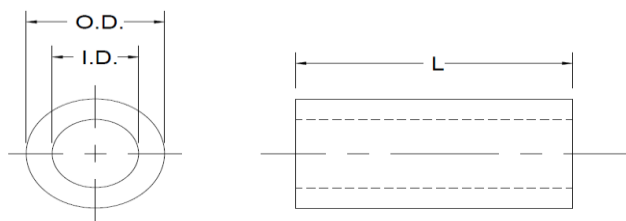
ID +/- 0.0030"

L	+/-
< 0.625"	0.010"
0.625" - 0.875"	0.015"
> 1.000"	0.020"

BEAD, SLEEVE, HOLLOW PART NUMBERS

P5 - Indexed Size & Material

OD in.	ID in.	L in.	CATALOG #					
			E	TH	SF	J	W	C
0.082	0.062	0.192	P5-3776		P5-3792			P5-4003
0.093	0.030	0.063				P5-1288		
		0.100			P5-2593			
0.098	0.074	0.187			P5-4142			
		0.217			P5-4111			
0.125	0.035	0.050				P5-2931		
	0.043	0.080				P5-2930		
	0.098	0.300			P5-4179			
	0.106	0.312	P5-3981					
0.132	0.098	0.330	P5-3290		P5-3283			
0.136	0.105	0.250	P5-2774		P5-2773			P5-2775
		0.315	P5-4125		P5-4161			
		0.360	P5-3881		P5-3882			
0.139	0.064	0.175	P5-2079					
0.149	0.110	0.362	P5-3949					
0.151	0.099	0.320	P5-2945					
0.154	0.120	0.365	P5-3295					
0.164	0.129	0.405	P5-4191					
0.210	0.109	0.140						P5-3975
0.238	0.091	0.245	P5-2255					
0.245	0.156	0.406	P5-1499					
		0.590	P5-1441					
		0.750						P5-1429
		0.970						P5-1415
		0.406	P5-1352					



BEAD, SLEEVE, HOLLOW CORES 2

SPECIFICATIONS

OD +/- 0.0025

ID +/- 0.0030"

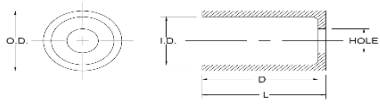
L	+/-
< 0.625"	0.010"
0.625" - 0.875"	0.015"
> 1.000"	0.020"

BEAD, SLEEVE, HOLLOW PART NUMBERS

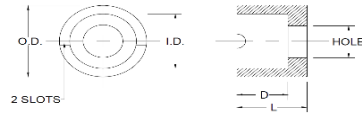
P5 - Indexed Size & Material

OD in.	ID in.	L in.	CATALOG #					
			E	TH	SF	J	W	C
0.255	0.186	0.190		P5-1571	P5-1726		P5-1724	P5-1872
0.350	0.251	0.187	P5-1403		P5-2604			
		0.225	P5-1041					
	0.256	0.250	P5-1652					P5-1653
0.363	0.261	1.156						P5-2009
0.365	0.256	0.430			P5-1575			
		0.565	P5-1579					
		0.750			P5-1431			
		0.845			P5-1629			
		1.000			P5-1498			
0.370	0.125	0.125	P5-1335					
		0.250	P5-1800					
		0.500	P5-1795					
	0.140	0.500	P5-1987					
0.760		P5-1823						
0.375	0.250	0.350		P5-1003				
0.435	0.353	0.250	P5-2608					
0.457	0.375	0.281	P5-1065					P5-2732
		0.437						P5-2576
		0.570						P5-1641
0.500	0.125	0.500	P5-2254					
	0.137	0.930	P5-1472					
	0.375	0.500						P5-2584

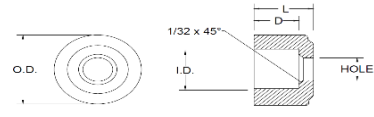
CUP CORES



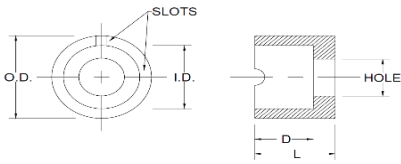
A



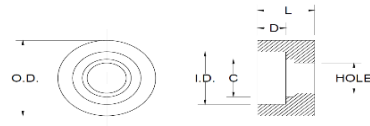
B



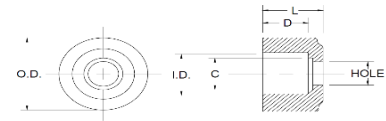
C



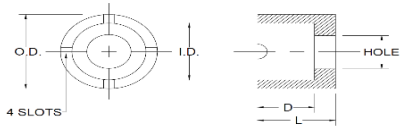
D



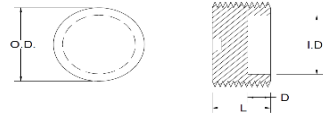
E



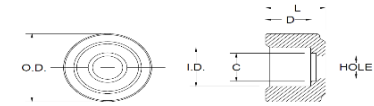
F



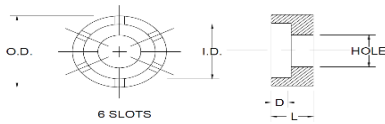
G



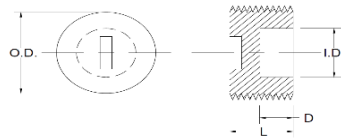
H



I



J



K

Various Sizes Shapes Available

History

Pyroferric was established 1935 in New York , in the 1960's moved to Toledo Illinois, Purchased by TSC in the 1990's.

Quality Policy

To provide the highest value magnetic materials to our customers through a combination of exceptional quality, price, delivery and service.

Pyroferric is compliant to ISO 9000 1994.

International Environmental Regulatory Compliance

RoHS * REACH * ELV * WEEE * Halogen Free

Social Accountability Compliance

US Family and Medical Leave Act
US Environmental Protection Agency
US Clean Air Act
US National Primary Drinking Water Regulation

US Fair Labor Standards Act
US Occupational Safety and Health Administration
US Equal Employment Opportunity Commission
US Conflict Free Minerals

Warranty / Disclaimer

"TSC International" expressly warrants to the "Buyer" for whom it manufactures, sells and delivers product made of magnetic materials will conform to specifications and drawings as published within the product catalog. Buyer specifications that have not been approved by the International Electronic Commission shall be considered as a custom product, and will be warranted by TSC International in a separate written agreement.

There are no other express or implied warranties which extend beyond the above-referenced warranty of conformance to the specifications and specifically. TSC International does not warrant that any product will be merchantable or fit for the particular purpose for which the purchaser , its successors, agents or affiliates, intends to use product. Before using these products , buyer agrees to determine suitability of the product for their intended use or application.

Buyer shall notify TSC International in writing (and reasonable detail) of any defect in any product within thirty (30) days after the delivery date thereof. If products do not conform to the specification and TSC determines to its satisfaction that the parts are defective, and the defect is not due to miss-use, accident or improper application, buyer's remedy shall be limited , at TSC international's sole discretion, to either (1)The return of such product in exchange for the return of, or credit for any payment received by TSC International relating thereto; (2) The replacement of such product; or (3) The repair of such product. TSC International shall pay reasonable shipping costs incurred in connection with the return, replacement or repair of any defective product. Solution to resolve defective product shall be within (60) days after written receipt of written notice from the buyer of such defect.

TSC International shall not be liable for any incidental or consequential loss, damage, or expense (including without limitation, economic loss or lost profits) of buyer for any defective product sold and delivered to the buyer regardless or whether such loss, damage or expense results from breach of contract or warranty or commission of tort (including, without limitation, strict liability or negligence).

These products are not designed for use in life support appliances, devices or systems where malfunction of these products can reasonably be expected to result in personal injury, Buyers that are using or selling these products for use in such applications do so at their own risk and agree to indemnify TSC International for any damages resulting from such application.

TSC INTERNATIONAL FAMILY OF COMPANIES

TSC
BOURGEOIS
SOFT MAGNETIC LAMINATIONS

F **FERRITE**
INTERNATIONAL
COMPANY
Mn Zn FERRITE CORES

Pyroferric
IRON POWDER CORES